


Weather Forecast



- Automatically manipulates your climate control system based on the weather forecast
- Displays forecast data by region
- Shows hour-by-hour forecasts for the next 5 days
- Updates forecast data 4 times a day

	Weather forecast 1	Weather forecast 2	Weather forecast 3	Weather forecast 4
Date [dd/mm/yy]	4-10-2004	4-10-2004	4-10-2004	4-10-2004
Time [hh:mm]	15:00	16:00	17:00	18:00
Expected temperature [°C]	18.7	17.9	16.9	16.0
Expected global radiation [W/m²]	252	178	97	17
Expected global radiation sum [J/cm²]	91	64	35	6
Expected net radiation sum [J/cm²]	7	4	2	0
Expected wind-speed [m/s]	6.2	5.5	4.8	4.1
Expected wind direction [°]	215	225	243	260
Expected RH [%]	69	75	80	85
Expected vapour pressure deficit [hPa]	6.8	5.2	3.8	2.8
Expected overcast	5	5	5	5
Expected overcast [%]	61	65	66	66
Expected precipitation rate [mm]	0.2	0.2	0.2	0.2
Expected precipitation chance [%]	70	70	70	70

Flexible control manipulation based on weather forecast variables

The Weather Forecast module enables pre-set values to be manipulated based on the latest forecast data. This means that you can decide beforehand how climate control should react to changes in the weather forecast. HortiMaX does this by configuring 'influence' settings in the MultiMa which are then applied to the desired pre-set values. The MultiMa can, for instance, be programmed to

- Switch the lighting on or off sooner based on the radiation forecast;
- Close the thermal screen sooner based on the temperature forecast.



Weather Forecast

CO₂ Optimizer

The HortiMaX Weather Forecast module can also be used in combination with other predictive control software, such as the CO₂ Optimizer, which is designed to maximize the efficiency with which CO₂ sources, such as flue gas, CHP units, OCAP and pure CO₂ are utilized.

Programmable influences in the MultiMa

Programmable influences allow the MultiMa to manipulate pre-set values based on variables from the weather forecast. This means, for instance, that the maximum vent position can be lowered depending on the outside temperature forecast. The MultiMa is able to manipulate up to 100 pre-set values using programmable influences.

Retrieving the weather forecast

The HortiMaX Weather Forecast module provides information on the weather prospects for a particular area over the next five days. This weather forecast is downloaded from a meteorological office, which issues a specific forecast for each postal code area. The weather forecast contains hour-by-hour predictions up to 5 days in advance, starting from 00:00 hrs on the current day. The weather forecast is updated 4 times a day via an Internet connection.

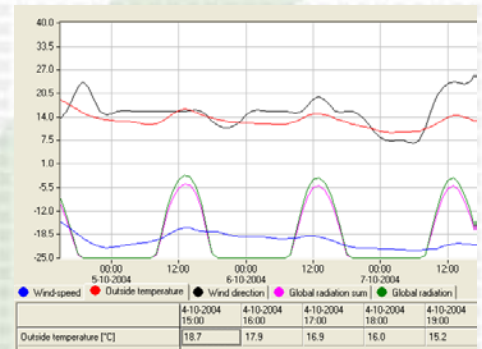
Data

The following forecast data are shown:

- Date
- Hour (local time)
- Wind speed at 10m height (m/s)
- Wind direction at 10m height (°)
- Air temp at 1.5m height
- Solar radiation sum (J/cm²)
- Solar radiation (W/m²)
- Net radiation sum (J/cm²)
- Relative humidity (%)
- Vapour pressure deficit (hPa)
- Cloud cover (octa)
- Cloud cover (%)
- Precipitation (mm)
- Probability of precipitation (%)
- Weather type (symbol)

Viewing and analysing data

A five-day, hour-by-hour forecast is shown in the Synopta interface software, enabling you to see precisely how weather conditions will develop. The forecast data are shown both in table and graph format. The hourly forecast values for the current day, the following day and the day after that are also displayed as forecast averages.



Requirements

You will need the following to install the Weather Forecast Module:

- Weather Forecast module
- Weather forecast annual subscription
- Synopta Server running Windows 2000 or XP and a virus scanner
- Synopta® version 2
- Internet connection

More information?

For more information, please contact HortiMaX directly (phone: +31 (0)15 362 03 00) or one of our dealers near you. You can also visit our website at www.hortimax.com.

